

KEY

1. MEANS OF ESCAPE

- FS30 - 30 MINUTE FIRE DOOR WITH SMOKE SEAL
- FS30SC - 30 MINUTE SELF CLOSING FIRE DOOR WITH SMOKE SEAL
- FS60 - 60 MINUTE FIRE DOOR WITH SMOKE SEAL
- FS60SC - 60 MINUTE SELF CLOSING FIRE DOOR WITH SMOKE SEAL
- M - DENOTES DOOR IS ON A MAGNETIC HOLD-OPEN WHICH RELEASES UPON THE FIRE ALARM
- - PRIMARY ROUTE OF ESCAPE

2. FIRE ALARM

- REFER TO G4S INSTALLATION LAYOUT

3. EMERGENCY LIGHTING

- E1A - Zumtobel Resclite C Antipanic
- E1C - Zumtobel Resclite C Escape
- E6 - ACDC Arena
- E8 - Zumtobel Resclite C Antipanic
- XJe - Tekna Nautic Ilford Wall C
- XCe - Bega LED Wall Light
- E1 - Eaton Micropoint 2 Open Area
- E2 - Eaton Micropoint 2 Escape Route
- E3 - Eaton Micropoint 2 High Output
- E5 - Zumtobel Onlite Resclite C Antipanic
- E6 - Zumtobel Onlite Resclite C Antipanic IP65
- hkxBE - Concord Sterling Bulkhead
- hkFE - Sylvania Sylproof Superia LED
- hkKE - Thorn Loire
- hkxAE - Bega LED Wall Light

4. FIRE FIGHTING EQUIPMENT

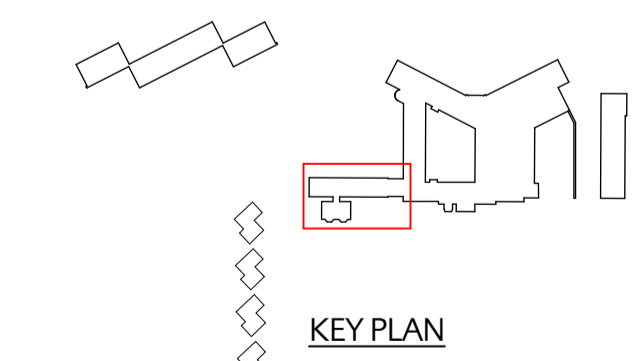
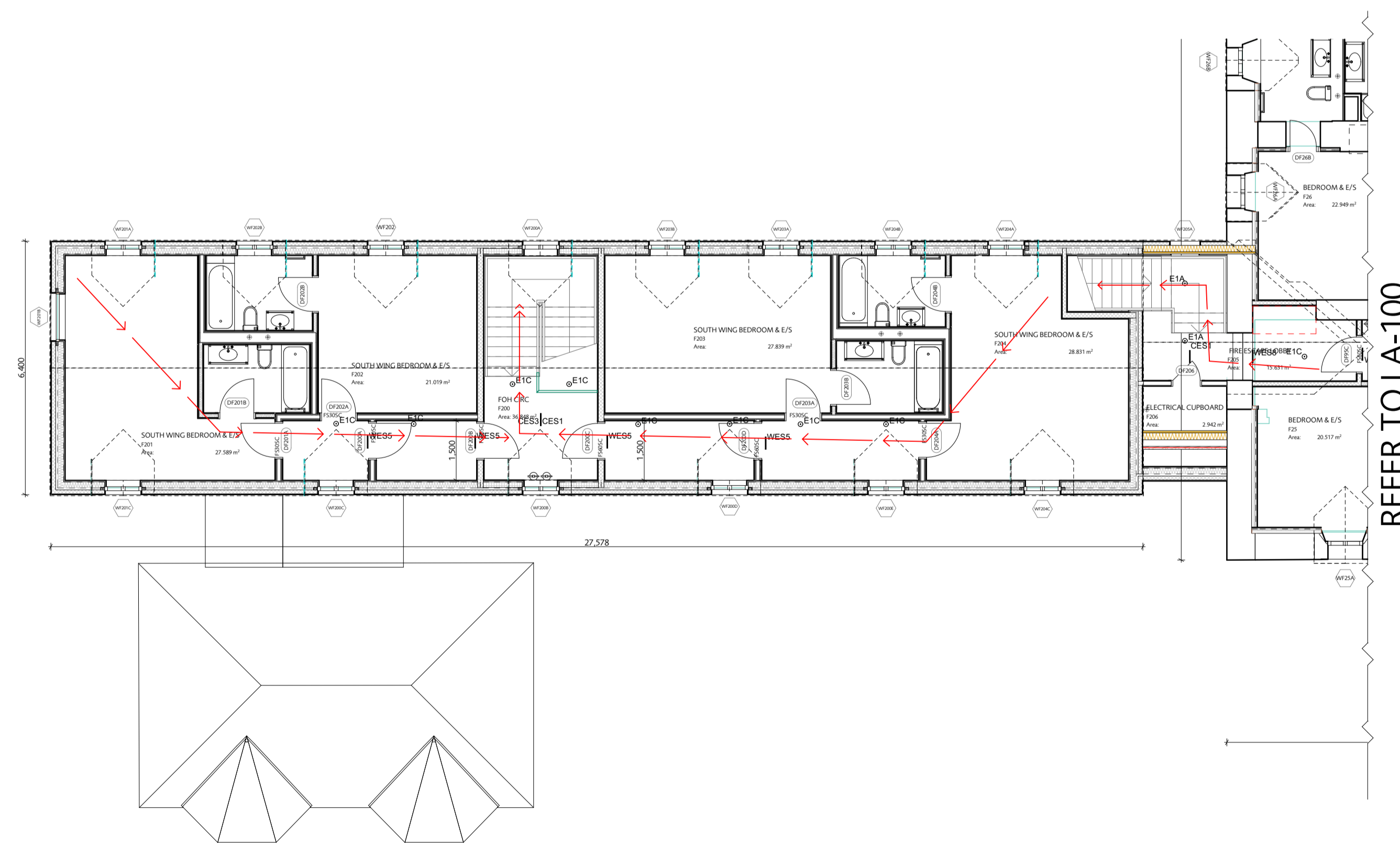
- ☺ - Portable fire extinguisher, final layout and type tbc
- FAP - Fire alarm panel
- ☺☺ - Ansul fire suppression
- ☺ - Fire fighting water storage tank, refer to site plan for positions

5. SIGNS AND NOTICES

- CES1, - Zumtobel Onlite Artsign ED Ceiling Recessed
- CES2, - Zumtobel Onlite Artsign ED Ceiling Recessed
- CES5, - Zumtobel Onlite Artsign ED Ceiling Recessed
- CES6, - Zumtobel Onlite Artsign ED Ceiling Recessed
- CES7, - Zumtobel Onlite Artsign ED Ceiling Recessed
- CES8, - Zumtobel Onlite Artsign ED Ceiling Recessed
- WES1, - Zumtobel Onlite Artsign ED Wall Recessed
- WES4, - Zumtobel Onlite Artsign ED Wall Recessed
- WES5, - Zumtobel Onlite Artsign ED Wall Recessed
- WES6, - Zumtobel Onlite Artsign ED Wall Recessed
- WES7, - Zumtobel Onlite Artsign ED Wall Recessed
- WES8, - Zumtobel Onlite Artsign ED Wall Recessed
- EXIT 1 - Zumtobel Onlite Artsign ED Wall Recessed
- EXIT 2 - Eaton Exit SE LED
- EE - iGuzzini motus

LICENSING

- ☒ - Area to be licensed for sale of alcohol for consumption on the premises



KEY PLAN

<p>status FOR LICENSING APP.</p> <p>revisions - xx/02/2018 Issued for licensing application</p>		<p>HUDSON Architects NORWICH 27 St Andrews Street Norwich NR2 4TP Tel: 01603 766220 NICT Unit 1 High Street 35 High Street NR21 6BN 156 0530 711 853 LONDON 270 Cannon Street London EC1A 6EU www.hudsonarchitects.co.uk info@hudsonarchitects.co.uk</p>	
<p>job MACHRIE HOTEL & GOLF LINKS</p>		<p>address PORT ELLEN ISLAY</p>	
<p>licensing app.</p>		<p>site F FLOOR PROJECT 2 WING</p>	
<p>scale 1:100@A1</p>		<p>date 20/02/2018</p>	
<p>ISL</p>	<p>LA-111 -</p>	<p>job reference</p>	<p>drawing number</p>
<p>Do not scale off dimensions. Check all dimensions on site and report any apparent discrepancy immediately to Architect. This drawing is copyright.</p>			

DRAFT